

# Your journey starts here

Broken Hill 5-10 July 2021



## 6 Day Tour with Host

5 nights from \$1,703\*pp – single supplement from \$326pp

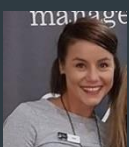
### PACKAGE INCLUDES

- 5 night's accommodation,
- 5 dinners, 4 lunches, 5 cooked breakfasts
- Morning teas from the coach
- Luxury coach travel
- Fully escorted with driver and hostess
- Entries as per itinerary.
- Local pick up

### HIGHLIGHTS

- Broken Hill is the famous and fascinating mining town in remote Western New South Wales. Beyond the Darling River in remote western New South Wales is the iconic and legendary mining town of Broken Hill. Dominating this town is the "Line of Lode" – the seven kilometre strip of what was the biggest deposit of silver, lead and zinc in the world. Unlike modern mining towns, where the accommodation is built well away from the mine activities, Broken Hill's population, in the pick and shovel days, built their houses as close as they could to their work. No trip to Broken Hill would be complete without a visit to the Jack Absalom Gallery, Pro Hart Gallery, and the famous Palace Hotel where scenes from Priscilla Queen of the Desert were filmed.

\*Conditions apply. Advertised prices are per person twin share and land only. Prices are correct at time of publication and are subject to availability and change at any time without notification due to fluctuations in charges, taxes and currency. Savings are included in the advertised prices. Third party supplier and other conditions apply. Please contact me for full terms and conditions.. \*A minimum of 25 adults is required to guarantee tour departure.



To find out more call **Trish Clowes**  
Your Personal Travel Manager

0424 196 546

Trish.clowes@travelmanagers.com.au  
facebook.com/trish.clowes/personaltravelmanager  
[travelmanagers.com.au/trishclowes](https://travelmanagers.com.au/trishclowes)



**TravelManagers**  
As individual as you are

# Your itinerary

## Melbourne to Broken Hill

### 6 Day Hosted Tour

Group tour

#### Day 1: Melbourne to Wentworth -

Welcome to our 6 day tour featuring the remote North West of New South Wales. Bags packed we set off on our adventure.. Late afternoon we arrive at the Wentworth Grande Resort and settle into our rooms for the night.

**Day 2: Wentworth to Broken Hill -** We head north to Broken Hill and arrive at Bells Milk Bar for lunch at this 1950s style milk bar that will definitely take us back to a time that is fondly remembered. Visit to the Royal Flying Doctor Base at Broken Hill Airport. We will enjoy a guided tour of this fascinating facility and experience first-hand a real life Flying Doctor base in action.

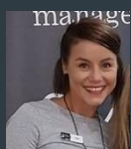
**Day 3: Exploring Broken Hill -** This morning a local guide will join us, describing the history of Broken Hill. Dominating this town is the "Line of Lode" – the seven kilometre strip of what was the biggest deposit of silver, lead and zinc in the world. Unlike modern mining towns, where the accommodation is built well away from the mine activities, Broken Hill's population, in the pick and shovel days, built their houses as close as they could to their work. However it is the dramatic "Big Picture" painted by Peter Anderson that will be a highlight of our tour to Broken Hill. The experience is breathtaking as we gaze out to the distant Flinders Ranges, follow ancient river beds dotted with gum trees, and see a massive thunderstorm unfolding

in the desert and get a view of the Sculpture Symposium and Living Desert area to the west of Broken Hill. Late morning, we drive to Silverton, which preceded Broken Hill and was for a time, the largest town in the Barrier Ranges. Today it's a virtual ghost town but a number of the historic buildings remain. We enjoy a light lunch at the Silverton Pub, then step back in time at the Silverton Gaol and Historical Museum. Not far is Mundi Mundi Lookout, located 5kms west of Silverton, the Mundi Mundi plains is a truly breathtaking place. The wide flat heart of the Australian outback extends seemingly forever and on a clear day the curvature of the earth can be seen!

**Day 4: Exploring Broken Hill -** Our first visit today is to the quirky White's Mineral Art Gallery and Mining Museum. Kevin 'Bushy' White's vision is to go underground without going underground, a visit to the Museum will take us on an illustrated journey through the architectural and mining history of the city. Late morning we head to the Jack Absalom Gallery for a look at the artworks on display, then have some free time to look through the shops and cafes in Argent Street. After lunch (passengers' own expense) we pay a visit to one of Australia's most popular artists, that has made Broken Hill his home. At the Pro-Hart Gallery, we have arranged afternoon tea and some time to look through the gallery.

**Day 5: Broken Hill to Swan Hill -** Today we re-trace our steps and return to Wentworth for lunch at the Crown Hotel. Back on the coach we spend the afternoon travelling to Swan Hill and check into our motel on arrival. Following dinner we head to Swan Hill's Pioneer Settlement for the Heartbeat of the Murray sound and laser show. This wonderful sound and light show is the first of its kind and utilizes water, light, laser, sound and special effects to tell the fascinating story of the Murray – from 30 million years ago to today! The set features 20 water fountains, each of which can spray water up to 40 metres high and is fitted with individually coloured LED light. The show will face the Little Murray River making it the first show of its kind to use a natural river environment and setting as the background.

**Day 6: Back to Melbourne -** Our morning stop is at Lake Boga – just 16 kms south of Swan Hill. Lake Boga is home to the famous Catalina Flying Boat A24-30 – one of only 4 in Australia. War 2. Lake Boga was an ideal stretch of water on which the mighty flying boats could alight. There is now a Flying Boat Museum and an interactive map with an informative 20 minute film in the theatre. We'll step back in time, learn about the production processes, machinery, working conditions and traditional skills of Bendigo Pottery from its beginnings in 1858 to modern day. From Bendigo we head for home and arrive back in Melbourne late afternoon.



To find out more call **Trish Clowes**  
Your Personal Travel Manager

**0424 196 546**

Trish.clowes@travelmanagers.com.au  
facebook.com/trish.clowes.personaltravelmanager  
[travelmanagers.com.au/trishclowes](http://travelmanagers.com.au/trishclowes)



**TravelManagers**  
As individual as you are