

Your journey starts here

Sydney Vivid Lights



6 Day Tour with Host

5 nights from \$1,978*pp – single supplement from \$417pp

Departs Friday 11 June – Wednesday 16 June 2021

PACKAGE INCLUDES

- 5 night's accommodation,
- 5 dinners, 2 lunches, 5 cooked breakfasts
- Morning teas from the coach
- Luxury coach travel
- Fully escorted with driver and hostess
- Entries as per itinerary.
- Local pick up

HIGHLIGHTS

- Sydney, the 'Harbour City' comes alive every June with the festival of light known as Vivid Lights ... be prepared to be in awe as one of the world's most beautiful harbours lit up in a new light ... including outdoor immersive light installations and projections this truly is a night to remember. We will get an up close and personal viewing the magic of the light festival as we enjoy a dinner cruise on the harbour. Of course whilst in Sydney we will take in all the other beautiful attractions including visiting Mrs Macquarie's Chair where we get views of the Opera House and Sydney Harbour Bridge, together with a day in the majestic Blue Mountains.

*Conditions apply. Advertised prices are per person twin share and land only. Prices are correct at time of publication and are subject to availability and change at any time without notification due to fluctuations in charges, taxes and currency. Savings are included in the advertised prices. Third party supplier and other conditions apply. Please contact me for full terms and conditions.. *A minimum of 25 adults is required to guarantee this departure.



To find out more call **Trish Clowes**
Your Personal Travel Manager

0424 196 546

Trish.clowes@travelmanagers.com.au
facebook.com/trish.clowes.personaltravelmanager
travelmanagers.com.au/trishclowes



TravelManagers
As individual as you are

Your itinerary

Sydney Vivid Lights 6 Day Hosted Tour

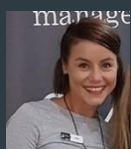
Day 1: This morning, after we have loaded the coach and completed our passenger pickup service, we are ready to go. We make our way to Seymour for our morning break and here we can stretch our legs at The Vietnam Veterans Commemorative Walk. Our lunch stop is in the historic town of Chiltern, followed by a guided tour of the historic Dow's Pharmacy and the Athenaeum Museum. Sit back and relax this afternoon, as we express to Goulburn for our overnight accommodation. We can enjoy dinner, then retire for the evening to get ready for an interesting day tomorrow.

Day 2: Departing after breakfast, we travel to the Southern Highlands for an entertaining visit to the Bradman International Cricket Hall of Fame. The Hall of Fame was inspired by Sir Donald Bradman, the greatest cricketer of all time. The Bradman Gallery is the mecca for cricket fans the world over and those who are interested in this great Australian icon, housing rare and priceless items that tell the story of the Boy from Bowral! On arrival in Sydney we stop to purchase lunch, then our first visit is to Elizabeth Bay House. Designed by the

most fashionable and accomplished architect of the day, John Verge, for the Colonial Secretary, Alexander Macleay and his family, Elizabeth Bay House was known as 'the finest house in the colony'. Elegantly furnished to the period of 1839-1845, the interiors reflect the lifestyle of the Macleays and present an evocative picture of 19th century life. We enjoy a guided tour of the house and take in the fantastic Harbour view, and then have a short drive to our hotel in Rushcutters Bay, where we can settle into our rooms and then meet again over dinner.

Day 3: Following breakfast, we begin our day's touring through Sydney. First, we head to the harbour foreshore to see Mrs Macquarie's Chair. The chair was carved out of sandstone by convicts for Governor Lachlan Macquarie's wife in order for her to watch the activity on the harbour and await the arrival of Ships from England. The point provides us with wonderful views of the Sydney Opera House, Harbour Bridge and Fort Denison. From here we head around to North Head for our tour of the Q Station. The Quarantine Station

was used from 1833 to 1984 for migrant ships carrying passengers with suspected contagious diseases. These passengers and crew were off-loaded into quarantine to protect local residents. As we explore the history of the Quarantine Station, its historical buildings and stunning grounds we'll hear the personal stories of passengers quarantined and the dedicated staff who lived and worked on site. It is an interesting visit followed by lunch. We head back to the hotel via Manly for an opportunity to wander the Corso. Early evening, we transfer to King Street Wharf and join our Vivid Lights Cruise for a great view of Sydney by night. Sydney is transformed into a spectacular canvas of light, music and ideas when Vivid Sydney takes over the city after dark and the never ending expanse of the Jamison Valley. We now return to Sydney for dinner in the hotel restaurant.



To find out more call **Trish Clowes**
Your Personal Travel Manager
0424 196 546

Trish.clowes@travelmanagers.com.au
facebook.com/trish.clowes.personaltravelmanager
travelmanagers.com.au/trish.clowes



TravelManagers
As individual as you are

Your itinerary

Sydney Vivid Lights 6 Day Hosted Tour

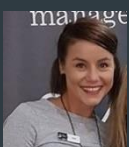
Day 4: Today we discover the beauty of the Blue Mountains - a stark contrast to the hustle and bustle of Sydney. Our first stop is at the Penrith Museum of Fire. This is no ordinary museum. Home to Australia's largest collection of Fire Brigade vehicles and much more is where we immerse ourselves into the fascinating world of fire and firefighting. Our guide will be an experienced firefighter so prepare to be challenged about fire safety in your own home so they never need to visit you there. Our coach then climbs into the Blue Mountains National Park where our lunch stop is in the village of Leura. Leura is aboriginal for "lava"; the name was given to the village because of the area's wealth of volcanic stones. It is the rich volcanic soil that is responsible for Leura's international reputation of possessing some of the nation's most beautiful gardens. This afternoon we take the scenic Cliff Drive to Echo Point and the Three Sisters at Katoomba - a great stop for a photo opportunity! Near here is Scenic World where we ride on the Scenic Railway, the world's steepest incline railway. We descend 415m down the escarpment at a

gradient of 52 degrees and travel through the tunnel and ancient rainforest. When we disembark, we walk the 300m rainforest boardwalk to connect with the Flyway platform. The Scenic Cableway is the steepest aerial cable car in Australia. It will take us on a 545 metre ride up through the World Heritage Listed rainforest of the Jamison Valley. Our final adventure at Scenic World is to join the Scenic Skyway to take the journey 270m above ancient ravines and dazzling waterfalls. This ride boasts a world first, state of the art Electro-Scenic Glass Floor. At the flip of a switch breath taking views are revealed through the cabin floor directly below. The 360 degree birdseye view takes in the Three Sisters, Katoomba Falls, Mount Solitary and the never ending expanse of the Jamison Valley. We now return to Sydney for dinner in the hotel restaurant.

Day 5: This morning we have some free time before our transfer to the Museum of Sydney. For 57 years the first Government House was the centre of the social, ceremonial and

political life of the colony of NSW. Positioned on the same site today, the Museum of Sydney protects the fragile remains of this deeply significant and symbolic site, and tells ongoing stories of Sydney and its people. We are taken on a guided tour, and then have a short walk to Settlement on Quay for lunch, then just across the road we visit The Justice and Police Museum. We'll step into the dark side of Sydney's past as we're drawn into a world of crime, punishment and policing, from bushrangers, sly grog and razor gangs to forensics. A vast archive of crime scene photography and mug shots reveal more than a century of underworld Sydney. Mid-afternoon we depart Sydney and head to Goulburn for our final night of the tour

Day 6: Following breakfast, we complete our checkout formalities and depart the hotel. Today is a travel day as we make our way back to Melbourne. We arrive home late afternoon to complete a sensational holiday.



To find out more call **Trish Clowes**
Your Personal Travel Manager
0424 196 546

Trish.clowes@travelmanagers.com.au
facebook.com/trish.clowes.personaltravelmanager
travelmanagers.com.au/trishclowes



TravelManagers
As individual as you are